

SSL-VPN Aventail Connect

Felizitas Heinebrodt

Georg Simon Ohm University Nuremberg
computer center
Kesslerplatz 12, 90489 Nuremberg

Version 1

May 2011

Georg Simon Ohm University of Applied Sciences Nuremberg

SSL-VPN Aventail Connect

Content

- 1 Aventail Connect 1
- 2 Required Access Data 1
 - 2.1 SSL-VPN-Gateway 1
 - 2.2 Domain, Username and Password 1
- 3 Installation..... 1
 - 3.1 Aventail Access Manager..... 1
 - 3.2 Aventail Connect 2
- 4 Activation..... 2
 - 4.1 Login..... 2
- 5 Disconnect..... 3
- 6 Any Questions??? 3

SSL-VPN is a term for systems, which enables the transport of private data via public networks (see VPN) and use TLS (old term SSL) for internet encryption protocol.

A special hardware component, the **SSL-VPN-Gateway** ensures a secure access to the University network.

In order to use this access it is necessary to install the Aventail Connect software.

1 Aventail Connect

Aventail Connect creates a secure (encrypted) internet connection via the Gateway and allows access to resources of the University network, normally not accessible from outside.

2 Required Access Data

2.1 SSL-VPN-Gateway

The address of the SSL-VPN-Gateways is

<https://vpnssl3.cs.fh-nuernberg.de/>

2.2 Domain, Username and Password

Domain: my.ohm

Username: Your username for my.ohm

Password: The related my.ohm-password

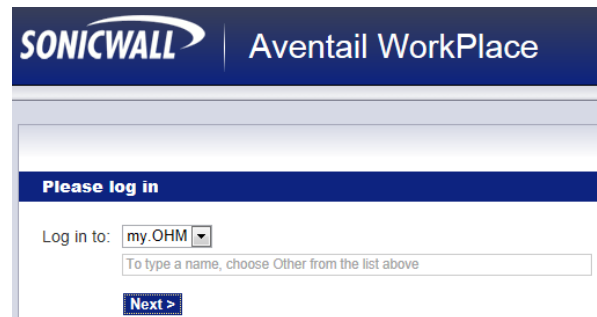
3 Installation

3.1 Aventail Access Manager

First use your Internet browser to build a secure connection to the login page of the SSL-VPN-Gateway.

In order to do so follow this link:

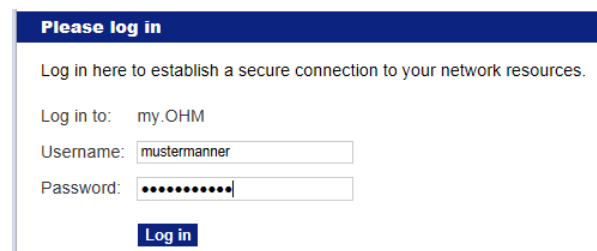
<https://vpnssl3.cs.fh-nuernberg.de/>



Select

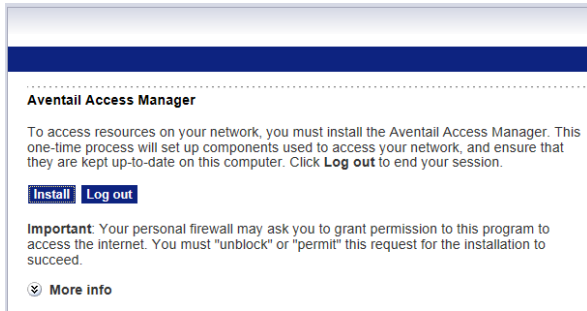
Log in to: my.OHM

➤ Next



Here you type your my.ohm access data and click on

➤ Log in



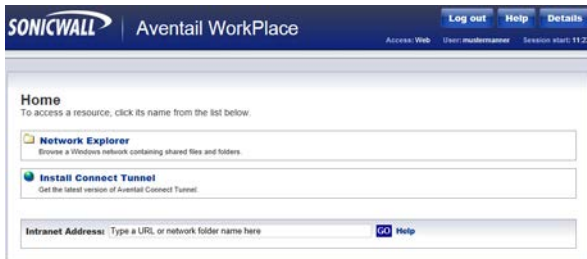
➤ Install



➤ Ausführen (Run)

In addition you might get some warnings from Windows. Click on

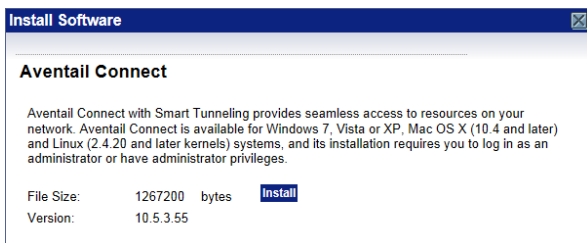
➤ Zulassen (Allow)



3.2 Aventail Connect

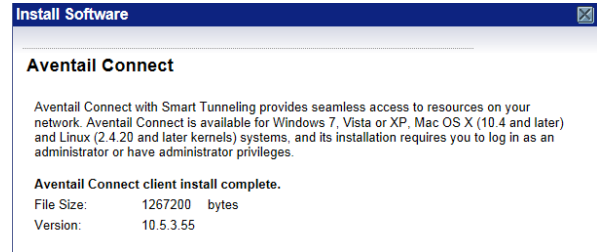
Now click on

➤ Install Connect Tunnel



➤ Install

After the complete installation you get a notification:



You can close this window.

4 Activation

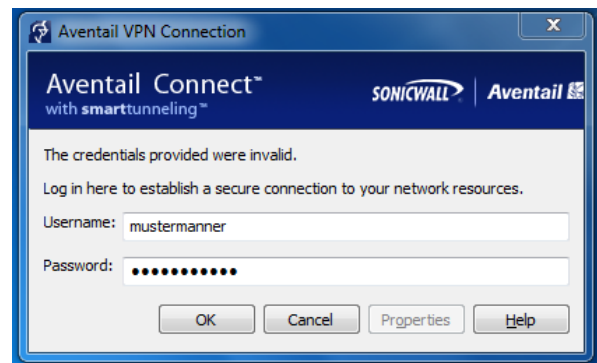
After the installation you find a new icon on your desktop.



Now you can build a secure connection via the Aventail Connect.

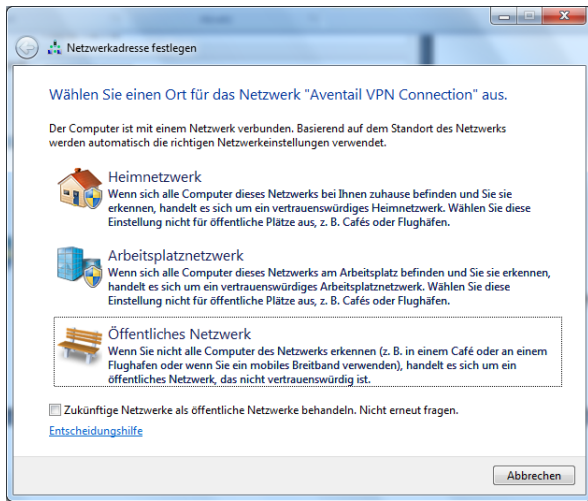
4.1 Login

First you will be asked for your login data.



Enter your my.ohm login data and click on

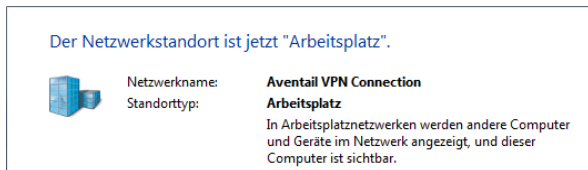
➤ OK



Select

- Arbeitsplatznetzwerk

After successful connection you will get the notification.



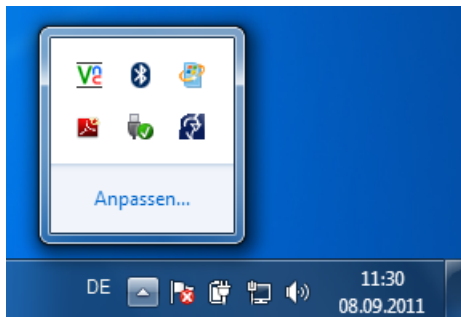
You can close this window. The connection will remain though.

This is indicated by a according symbol in the task bar.



5 Disconnect

In the bottom right-hand corner of your Task bar you find a symbol for aventail.



To end the SSL-VPN session click right on the Aventail symbol and select

- Disconnect

6 Any Questions???

You will find detailed help texts (in English), if you click right on the Aventail symbol in your task bar an select

- Help

If you have any problems with your installation, you can find help in the „Notebook-Sprechstunde“ of the computer center. The opening hours can be found on the websites of the computer center.